

# Amazon Sales Guide

## Superior Amazon Cruises

Dear Colleague in Travel:

Thank you for your interest in our two Amazon cruises. The M/Y Tucano is a very comfortable and elegant vessel, but when promoting cruises, please remember that *it is the experience that counts*. Travelers want to know that they are getting the very best experience possible in an Amazon cruise and in this way our cruises are **Superior Amazon Cruises**. We explore true remote forests, our group size is small, our guides have deep expertise, and we bring authoritative knowledge to rainforest wildlife. Our superior cruises are the most authentic in all of the Amazon.

This booklet is a guide to enrolling passengers on our Amazon cruises. For still more information consult our website: [www.amazon-nature-tours.com](http://www.amazon-nature-tours.com). If you wish a photo CD for websites or brochures, please let us know. Give us a call or send a message with any questions you may have. We look forward to offering your passengers an exceptional experience in the greatest wilderness on Earth.

### Our Two Amazon Cruises

#### 1. (8D/7N) Amazon Expedition Cruise "Voyage to the Heart of the Amazon"

This is a true *expedition cruise* with 7 full days and 7 nights of deep forest exploration. With this amount of time to explore, a good boat, a skilled crew, and adventurous passengers, we venture far into the Amazon rainforest wilderness in search of wildlife.

#### 2. (5D/4N) Compact Amazon Cruise "The Amazon Odyssey"

This compact cruise is especially good for travelers who have a multi-destination trip within Brasil. It offers the essence of Amazon culture and wildlife and an authentic experience.



### Amazon Nature Tours

Natureza Amazônica Viagens e Turismo

Sales and Reservations:

Email: [info@amazon-nature-tours.com](mailto:info@amazon-nature-tours.com)

Web: [www.amazon-nature-tours.com](http://www.amazon-nature-tours.com)

USA Sales : (001) 401-423-3377

Skype: Vendas-ANT



**National Geographic Adventure** magazine has recommended our company as among the "Best Adventure Travel Companies on Earth". Their criteria are education, sustainability, quality of service, and spirit of adventure.

*Two Years in a Row!*



### About Our Amazon Cruises

Our cruises are the most informative, active, and authentic trips in the Amazon. Why?

**A) Authentic and Active Program:** Our trips go beyond the tourist experience of most trips to the Amazon. We visit areas that are not visited by other groups. We see creatures that are almost never seen on other Amazon trips. The program is also active with several excursions off the boat every day. Every morning we walk in the forest. But there is no difficulty for older travelers because when we go into the forest we divide into small groups each with a private guide and woodsman.



**B) Small Groups:** We fill a maximum of 9 cabins on our cruises. With this small group, the trip is more focused on the rainforest and importantly travelers can spend more time with the guides which makes it a much better experience.

**C) Comfortable Vessel and High Quality Service:** Though not a luxury vessel, the M/Y TUCANO is a comfortable and well appointed expeditionary vessel. All the cabins are outside cabins with private baths and air-conditioning. The vessel has the style and elegance of lots of polished brass and highly varnished woodwork. We have a large crew that keeps the vessel clean and helps travelers in every way possible to enjoy the trip.

**D) Highly Skilled Guides:** Our guides are some of the very best in the Amazon. They are skilled bilingual naturalists and their experience helps passengers unlock the secrets of the magnificent wildlife of the rainforest.

### Index

Rates for Our Two Amazon Cruises	p. 2
Booking Details	p.3-4
Sustainability	p. 4
The MOTOR YACHT TUCANO	p. 5
<i>Itinerary: Voyage to the Heart of the Amazon</i>	p. 6-7
<i>Itinerary: Amazon Odyssey</i>	p. 8-9
Frequently Asked Questions	p. 10
About Amazon Nature Tours	p. 10

(1) Expedition Cruise (8 Day / 7 Night)  
**Voyage to the Heart of the Amazon**  
 Trip Rack Rates

**Where This Trip Begins and Ends**

**Embark:** Saturday, Day 1: Passengers meet our guide at 07:00AM in the reception area of the Hotel Tropical, Manaus, Brasil.

**Disembark:** Saturday, Day 8: Passengers disembark at the Hotel Tropical at 08:00AM. It is possible by prearrangement for guests to disembark the previous evening to catch early flights.

**2012 Trip Dates:** Jan 07-14, Jan 21-28, Feb 04-11, Feb 18-25, Mar 03-10, Mar 17-24, Mar 31-Apr 07, Apr 14-21, Apr 28-May 05, May 12-19, Jun 02-09, Jun 16-23, Jun 30-Jul 07, Jul 14-21, Jul 28-Aug 04, Aug 11-18, Aug 25-Sep 01, Sep 15-22, Sep 29-Oct 06, Oct 13-20, Oct 27-Nov 03, Nov 10-17, Nov 24- Dec 01, Dec 08-15, Dec 22-29

**2013 Cruise Dates:** Jan 05-12, Jan 19-26, Feb 02-09, Feb 23- Mar 02, Mar 09-16, Mar 23-30, Apr 06-13, Apr 20-27, May 04-11, May 18-25, Jun 08-15, Jun 22-29, Jul 06-13, Jul 20-27, Aug 03-10, Aug 17-24, Aug 31 - Sep 07, Sep 21-28, Oct 05-12, Oct 19-26, Nov 02-09, Nov 16-23, Dec 21-28

**Cruise Cost, Rack Rate, 2012:**

Green Category Cabins (per person, double): \$3,100  
 Yellow Category Cabins (per person, double): \$3,400

**Cruise Cost, Rack Rate, 2013:**

Green Category Cabins (per person, double): \$3,250  
 Yellow Category Cabins (per person, double): \$3,600

**Price Includes:** Price is per person, double occupancy. Price includes accommodations, and meals as indicated in the itinerary. Prices and itineraries are subject to change without notice. Bottled water served free of charge. On joining the group on Day One, passengers board the vessel on a short walk from the lobby of the Hotel Tropical.

**Prices Do Not Include:** Not included are airport transfers, airfare, departure taxes, visa fees, soft drinks or alcoholic beverages, or items of a personal nature.

**Cabin Categories:** There are two double occupancy cabin categories on the M/Y Tucano:

--**Green Category** cabins have bunk beds with above and below berths.

--**Yellow Category** cabins are larger and have beds side by side.

**\*\*\*Optional Single Occupancy:** No single supplement is charged if a single traveler is willing to share a cabin with another passenger. Passengers that request single accommodations pay a single supplement of 50% of the Green Category cruise cost. Single accommodations on the cruise may not always be available. The single cabins are the smallest on the vessel.

(2) Compact Amazon Cruise (5 Day / 4 Night)  
**The Amazon Odyssey**  
 Trip Rack Rates

**Where This Trip Begins and Ends**

**Embark:** Monday, Day 1: Passengers meet our guide at 04:00PM in the reception area of the Hotel Tropical, Manaus, Brasil.

**Disembark:** Friday, Day 5: Passengers disembark at the Hotel Tropical at 08:00am. It is possible by prearrangement for guests to disembark the previous evening to catch early flights.

**2012 Trip Dates:** Jan 16-20, Jan 30-Feb 03, Feb 13-17, Feb 27-Mar 02, Mar 12-16, Mar 26-30, Apr 09-13, Apr 23-27, May 07-11, May 21-25, Jun 11-15, Jun 25-29, Jul 09-13, Jul 23-27, Aug 06-10, Aug 20-24, Sep 10-14, Sep 24-28, Oct 08-12, Oct 22-26, Nov 05-09, Nov 19-23, Dec 03-07, Dec 17-21

**2013 Cruise Dates:** Jan 14-18, Jan 28-Feb 01, Mar 04-08, Mar 18-22, Apr 01-05, Apr 15-19, Apr 29-May 03, May 13-17, Jun 17-21, Jul 01-05, Jul 15-19, Jul 29- Aug 02, Aug 12-16, Aug 26-30, Sep 09-13, Sep 30- Oct 04, Oct 14-18, Oct 28- Nov 01, Nov 11-15, Nov 25-29, Dec 16-20, Dec 30 - Jan 03 ('14)

**Cruise Cost, Rack Rate, 2012:**

Green Category Cabins (per person, double): \$1,650  
 Yellow Category Cabins (per person, double): \$1,850

**Cruise Cost, Rack Rate, 2013:**

Green Category Cabins (per person, double): \$1,750  
 Yellow Category Cabins (per person, double): \$1,950

**Price Includes:** Price is per person, double occupancy. Price includes accommodations, and meals as indicated in the itinerary. Prices and itineraries are subject to change without notice. Bottled water served free of charge. On joining the group on Day One, passengers board the vessel on a short walk from the lobby of the Hotel Tropical.

**Prices Do Not Include:** Not included are airport transfers, airfare, departure taxes, visa fees, soft drinks or alcoholic beverages, or items of a personal nature.

**Cabin Categories:** There are two double occupancy cabin categories on the M/Y Tucano:

--**Green Category** cabins have bunk beds with above and below berths.

--**Yellow Category** cabins are larger and have beds side by side

**\*\*\*Optional Single Occupancy:** No single supplement is charged if a single traveler is willing to share a cabin with another passenger. Passengers that request single accommodations pay a single supplement of 50% of the Green Category cruise cost. Single accommodations on the cruise may not always be available. The single cabins are the smallest on the vessel.

## Booking Details for Our Cruises

### 3) How to Reserve Places for FIT Passengers

Email: [info@amazon-nature-tours.com](mailto:info@amazon-nature-tours.com)

Tel: 001-401-423-3377

Skype: Vendas-ANT

- Please give us passenger names as they appear on their passports.
- Are they traveling as double or single occupancy? If a single, is the traveler willing to share a cabin?
- Which category of cabins do the travelers request, Green or Yellow?
- Would the travelers like an optional hotel night prior to the cruise *Voyage to the Heart of the Amazon* (very strongly recommended)?
- Would the travelers like an optional city tour after the cruise *Voyage to the Heart of the Amazon*?

**4) Discounts for Children:** On regular departures children 12 years and under who share a room with an adult are eligible for a discount of 50% off the Cruise Rate, subject to cabin availability.

**5) Family Departures:** All of our trips are family friendly, but the *Voyage to the Heart of the Amazon* has two "Family Departures" which include some additional activities for children. These departures are suitable for adults as well as children. Detailed information can be found on the following web page: [www.amazon-nature-tours.com/am\\_family.html](http://www.amazon-nature-tours.com/am_family.html)

**6) Triple Cabins:** Some of the cabins on the M/Y TUCANO can accommodate three travelers. This is helpful for families. These are cabins "3" and "4" where a third narrow bed can be placed between the single beds and cabin "0" which has a queen size bed and also a single bed. There is no discount for triple occupancy, passengers pay the double rate.

**7) Quadruple Cabin:** One of the cabins on the M/Y TUCANO can accommodate four travelers. This is helpful for families. Cabin "0" has a queen size bed, a single bed and another single bed in a small adjoining room with a private interconnecting door. All four travelers share the single small bathroom of Cabin "0". Each passenger in quad occupancy must pay the double rate.

**8) Cabin Reservations:** All of the cabins on TUCANO are outside cabins with large windows, private baths with showers and air-conditioning. There are two categories of cabins: Green Category and Yellow Category (see boat description page 5).

**Green Category Cabins:** The four cabins in this category have above and below berths (bunk beds). These are cabins numbered 1, 2, 7, and 8. These cabins are significantly smaller than the Category Yellow cabins. They are nonetheless comfortable outside cabins with large windows, private bathrooms, and air-conditioning.

**Yellow Category Cabins:** The five cabins in this category are large and have beds side by side. They are numbered 3, 4, 5, 6, and cabin "0". Cabin "0" has a queen size bed beside a single bed, but a very small bathroom.

**9) Hotel Nights:** We strongly recommend that passengers on our expedition cruise ***Voyage to the Heart of the Amazon*** spend one night in Manaus prior to the cruise. This is because the cruise boards early in the morning on Day One. A hotel night prior to the cruise ***Amazon Odyssey*** is not necessary, but offers a good chance for travelers to relax. On request, we can book reservations at the five star Hotel Tropical where the M/Y TUCANO boards passengers. Rates subject to change.

Hotel Tropical, Manaus / Rack Rates: 2012

Rack Rates (USD)	Dbt	Sngl	Triple	Quad
Standard Room	100	190	N/A	N/A
Superior Room	120	230	100	85
Deluxe Room	140	270	115	100

**(10) Airport Transfers:** Transfers are offered at additional expense. We offer two types of transfers:

**Regular Bus Transfers:** Travelers originate on flights arriving at about the same time. May entail a wait of up to 40 minutes; this transfer is not escorted by a bilingual guide.

**Private Transfers:** are escorted by a bilingual guide and may include other travelers on the M/Y Tucano.

2012 / 2013 Regular Bus Transfers:

Rack Rates per pax per transfer	1px	2px	3+px
Airport - Hotel Tropical (or reverse)	52	26	26
Airport - Downtown Hotel (or reverse)	56	26	26

2012 / 2013 Private Transfers:

Rack Rates per pax per transfer	1px	2px	3+px
Airport - Hotel Tropical (or reverse)	80	50	35
Airport - Downtown Hotel (or reverse)	121	62	53

**11) Optional City Tour of Manaus:** A 3 hour tour of Manaus is available the Saturday that the cruise *Voyage to the Heart of the Amazon* ends. The tour consists of a visit to the boisterous *Mercado Municipal* of Manaus and the *Teatro Amazonas*, the famed Opera House of the Amazon. Included are the services of an English speaking guide, entrance fees and transportation to and from the Hotel Tropical. Most museums are closed on Sundays and holidays.

2012 Rack City Tour Rate: \$80

### 12) Administrative Procedure:

A) On receipt of the deposit we send a Confirmation Kit which includes the pre-departure booklet: "*Expedition Notes*".

B) Passengers should complete the Trip Application and Preference Memo included with "*Expedition Notes*".

C) Full payment is due 60 days prior to departure.

**13) Payment and Cancellations:** Each reservation must be guaranteed with a \$300 nonrefundable deposit. Payment can be made by agency check, bank check, money order, or by wire transfer. Cancellations must be made in writing. If cancellation is received 61 days prior to departure all payments will be fully refunded except the \$300 deposit per passenger. For cancellations between 60 and 45 days before departure, fifty percent of the total trip cost will be refunded. Less than 45 days before departure, no refund will be able to be made. Failure to secure a valid passport, visa, or air arrangements does not waive this refund policy. Inability to operate other side trips or schedule changes with side trips or flight schedules does not waive the refund policy. Refund policies are subject to change without notice.

**14) Airline Connections to Manaus, Brasil:** Manaus is the most readily accessible city in the Amazon. There are many flights from the large cities within Brasil and international flights from the USA and other countries in South America.

**European Travelers:** Most travelers from Europe will arrive in Manaus via connecting flights from São Paulo or Rio de Janeiro, Brasil. There are many international carriers flying through these Brazilian gateways with connecting flights to Manaus.

**United States Travelers:** There are currently three carriers with direct service to Manaus, Brasil from the United States.

A) *TAM Brazilian Airlines:* This carrier flies daily nonstop direct from Miami to Manaus.

B) *American Airlines:* This carrier flies daily nonstop direct from Miami to Manaus.

C) *Delta Airlines:* This carrier flies nonstop from Atlanta to Manaus.

D) *COPA Airlines:* This carrier has flights to Manaus connecting in Panama City. Connecting flights originate in New York, Miami, and Los Angeles.

**Flights from other countries in South America:** There are several flights weekly from other countries in South America which can help in creating a flight itinerary that includes several destinations. There are several weekly flights to Manaus from on TAM Airlines from Caracas, Venezuela, and flights on COPA from Panama City which connect well with flights from Peru or Ecuador.

**15) Visas:** Most passengers with European passports do not need tourist visas to enter Brasil. Citizens of Canada and the United States are required to secure a tourist visa. Information and forms are included in our pre-departure booklet: "Expedition Notes".

**16) Electricity and Conservation:** The electrical system on board the M/Y TUCANO is 110 volt/ 60 cycle alternating current. In the interests of conservation, in the morning and for a short time in the afternoon we turn off the diesel generators and all other noise making machinery on the M/Y TUCANO which includes the air-conditioning system. This is a good time to appreciate the wonderful stillness of the wilderness and the subtle natural sounds of the forest.



## 17) Sustainability

In many ways the M/Y TUCANO and our cruise operations are designed to conduct sustainable tourism and to minimize the environmental impact of our cruises. The basic areas on which we focus are waste management, energy conservation, and pollution control. All of our waste materials are returned to our city of departure, Manaus, Brasil. This includes all recyclable material which we separate on board the vessel. Where possible we avoid the use of disposable packaging.

In the realm of energy conservation we have equipment and procedures in place to conserve energy while at the same time retaining the comfort of our cruises. One of these measures is that, unless requested by the travelers, we change the cabin linens on board the vessel every other day instead of every day. This reduces the energy consumed in washing what are usually still clean linens. Two additional procedures are in place to reduce fuel consumption and emissions. First, we do not heat hot water 24 hours a day to be used in showers. Instead, we have "on-demand" water heaters installed in each cabin and we also have an auxiliary system with water that is solar heated.


Secondly, we have a policy of "low power hours" when we actually turn off all diesel consuming machines for certain hours of the day when they are not needed. This is done in the early morning and late afternoon when the boat is generally at anchor. The vessel remains comfortable even without electrical generation because it was designed to offer water, illumination, and climate control even without diesel generators operating. The M/Y TUCANO actually has two completely separate water systems. This ensures that even when there are no generators functioning, the sinks, toilets and showers on the vessel continue to function.

Because the vessel has large windows, travelers are able to use natural lighting during the day which eliminates the need to generate power for illumination. All but a very few of the light bulbs on the vessel are fluorescent which greatly reduces power consumed. When it comes to climate control, the M/Y TUCANO has an efficient air-conditioning system functioning in the heat of the day and at night. But even during the low power hours of the day, the cabins stay cool because the vessel is well thermally insulated. All of the windows on the vessel open and close and we have a practice of opening the windows in the public spaces in the cool of the afternoon. Many travelers choose to turn off the air-conditioning for the duration of the trip. Together these measures enable us to greatly reduce fuel consumption and emission of pollutants.

Our cruise procedures also include a number of measures to encourage sustainable conduct in the rainforest. We observe a zero impact policy which includes not removing anything from the forest, leaving nothing behind, staying on defined trails, not creating new trails, keeping noise to a minimum, and leaving no waste behind. We take considerable measures not to disturb creatures that we observe including not getting too close, leaving an area if an animal becomes disturbed, not handling creatures that we encounter. We recycle our waste, we haul our trash back to landfills in the city, and we use as many natural products as possible.

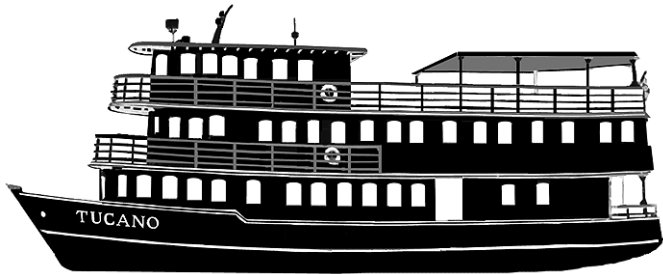
# The MOTOR YACHT TUCANO



Our trips are quite active and we spend much of our time off the vessel exploring the forest, but when we are on board, the M/Y TUCANO offers plenty of space to spread out and contemplate the wonders of nature. With over seventy large windows, the vessel is bright and airy. The cabins and the salon are air-conditioned and have elegant raised wood panelling in the style of the classic steamships that once cruised these majestic rivers. In the deck plans below, this symbol:  = windows. There are lots of them!

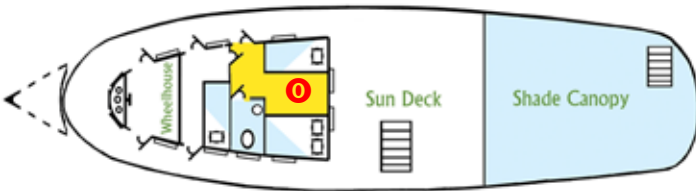


Yellow Category Cabin



## Observation Deck

On this deck there is only one cabin, number 0. This cabin has a queen sized bed and a single bed so it can accommodate three travelers. It is a large cabin but has a smaller bathroom than the other cabins.



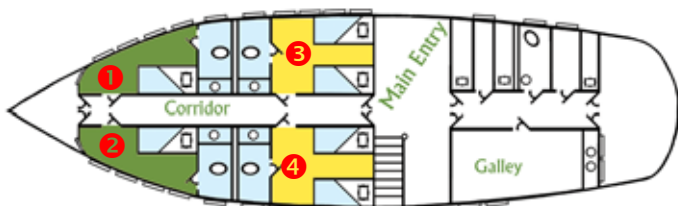
## Middle Deck

Cabins 5 and 6 have single size beds which can be placed together to form a queen size bed. Cabins 7 and 8 have bunks with a single size mattress above and below.



## Main Deck

Cabins 1 and 2 have bunks with a single size mattress above and below. Cabins 3 and 4 have single size beds which can be placed together to form a queen size bed.



## Cabin Categories

All of the cabins on TUCANO are outside cabins with large windows, private baths with showers, and air-conditioning. There are two categories of cabins. Category "A" cabins are the larger cabins and have beds side by side. Category "B" cabins are smaller and have above and below berths. If travelers prefer to choose particular cabin, there is an additional cost.

**Green Category Cabins:** The four cabins in this category have above and below berths with a single size mattress above and a single sized mattress below. These are cabins numbered 1, 2, 7, and 8. These cabins are significantly smaller than the Yellow cabins. But they are nonetheless comfortable outside cabins with large windows, private bathrooms, and air-conditioning.

**Yellow Category Cabins:** The five cabins in this category are large and have beds side by side. They are numbered 3, 4, 5, 6, and 0. Cabin "0" has a queen size bed beside a single bed.

**Triple Cabins:** Some of the Yellow Category cabins can accommodate three travelers. This is helpful for families. In cabins "3" and "4" a third narrow bed can be placed between the single beds.



Salon / Dining Room

## 18) Expedition Cruise (8D7N):

# Voyage to the Heart of the Amazon

*Voyage to the Heart of the Amazon* is different from all other cruises offered in the Amazon. It is an “expedition cruise”. We go far into the forest and are able to see creatures that are hidden to other visitors. We explore some of the most untouched rainforest in all of the Amazon. The voyage begins in Manaus, Brasil, and over eight days the MOTOR YACHT TUCANO navigates far up the *Rio Negro* [pronounced NAY-GRO]. In the daytime and often at night we seek out the wildlife that still lives in the world’s greatest of wilderness. There are very few settlers so the plants and animals are still abundant.

The voyage on the M/Y TUCANO is quite active. Together with our naturalist guides we get out into the forest and explore—not simply watch from the deck of the vessel. There are daily walks in the forest and we frequently scout in our launches the small streams that branch off the main river. Some days we swim off deserted beaches in water as pure and clean as rainwater and we are always treated to vistas of wild rainforest stretching as far as the eye can see.

On our excursions into the rainforest we observe magnificent plants of every imaginable shape and size. We listen to the exotic calls of birds and mammals and watch them from a forest trail or while scouting the river’s edge in our launches. In the evenings we have a brief discussion about the creatures that we observed and the extraordinary ways in which the plants and animals have evolved to live in this ancient rainforest. Some nights we explore the river’s edge in our launches and with spotlights we see caiman, close relatives of crocodiles.

Our basic navigation plan is to voyage upstream Northwest on the *Rio Negro* as far

as a major river called the *Rio Jaueperi*, about 200 miles from Manaus, Brasil. Along the way we explore many small tributaries where the forest is wild and undisturbed. Our journey takes us to many different rainforest habitats which allows us to see a great diversity of wildlife.

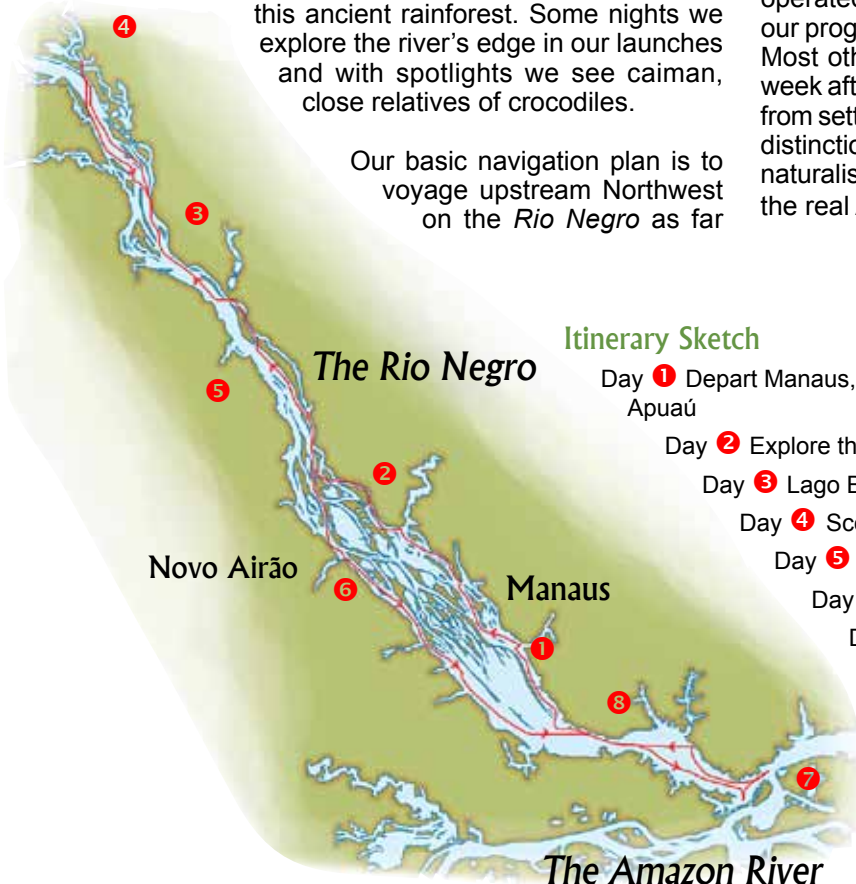
On the last day of the voyage we travel to the “*Encontra das Aguas*”, the meeting of the waters of the world’s two largest rivers: The Amazon River and the Rio Negro. The light colored water of the Amazon and the dark water of the Negro do not readily mix and the two rivers flow side by side for many miles. We explore the beautiful and fabulously rich environment where these rivers meet and visit the *Lago Janauari Ecological Park* which lies in a wedge-shaped delta that divides these two storied rivers.

### The Central Amazon Ecological Corridor

The *Voyage to the Heart of the Amazon* explores some of the most untouched rainforest in all of the Amazon. The M/Y TUCANO is the only vessel that explores far into the world’s largest Amazon reserve: *The Central Amazon Ecological Corridor*. Within this reserve are tens of thousands of square miles of uninhabited wilderness with the creatures that have made the Amazon the object of myth and legend. Along the *Rio Negro* there are only a few small settlements large enough to be considered towns. It remains a true wilderness. Beyond the tangle of vines and limbs along the river banks are hundreds of thousands of square miles of primitive forest where the forces that shape plant and animal evolution continue on as they have for millions of years.

### Expedition Cruising

Our cruise *Voyage to the Heart of the Amazon* is an “expedition cruise” which is very different from other tours operated in the Amazon. We go farther into the forest and our program is more thoughtful and authentic than any other. Most other Amazon cruises visit the same disturbed forest week after week. Our voyages on the M/Y TUCANO go far away from settlement into beautiful natural rainforest. Another major distinction of our trips is the quality of guiding. With our skilled naturalist guides and small group size, our guests experience the real Amazon that is hidden to most visitors.



### Itinerary Sketch

- Day 1 Depart Manaus, Brasil and voyage north on the Rio Negro to the Rio Apuaú
- Day 2 Explore the giant lake inside a river island, Lago Turia
- Day 3 Lago Buriti
- Day 4 Scout the Rio Jaueperi
- Day 5 A day on the west bank of the Rio Negro
- Day 6 Visit the boat building village of Novo Airão
- Day 7 Cruise the Amazon River and the Encontra das Aguas, the meeting of the Amazon River and The Rio Negro.
- Day 8 Return to Manaus, disembark early morning.

Please note that the day to day schedule must be considered approximate.

## Itinerary, Expedition Cruise: Voyage to the Heart of the Amazon

**Day 1** Early this morning all guests board the vessel the MOTOR YACHT TUCANO and depart upstream on the Rio Negro. Through the morning we will cruise through the world's largest river island system, the *Anavilhanas Archipelago*. From the observation deck we scan the magnificent tangle of vegetation at the water's edge. By mid-afternoon the vessel has gone beyond the frontier of settlement and entered a wilderness area. Both shores are covered by dense rainforest. Though we cannot predict what we will see, we have a good chance of observing pink river dolphins and a large collection of exotic birds. Most certainly we will be treated to magnificent forest vistas and the spectacular trees themselves. In the late afternoon we embark in the launches and hunt for wildlife. We may also go for a swim in some of the world's most clean and refreshing water. (LD)

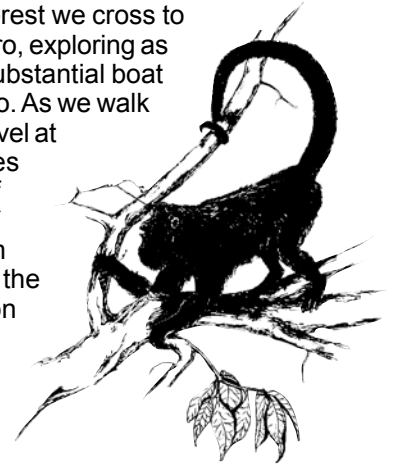
**Day 2** Early this morning we explore the rainforest along the waters edge in our launches. We should hear and perhaps see howler monkeys and we should hear a morning serenade of toucans. After breakfast we go for a walk in the forest where we will get a good start on understanding Amazon ecology. Around midday we return for lunch and the vessel will get underway, perhaps stopping at a place to swim. In the late afternoon we will again explore the forest in our launches and listen to the sunset chorus of birds and frogs. (BLD)

**Day 3** This morning there will be an early exploration of the waking forest. We will keep our eyes open for monkeys... on most trips we see them often. We return for breakfast followed by either a walk in the forest or an excursion in the launches. M/Y TUCANO will travel during the middle of the day and we stop in the afternoon for an excursion. Tonight the vessel may travel a bit more as we marvel at the night sky crowded with stars. (BLD)

**Day 4** After our two morning excursions The M/Y TUCANO will navigate along the heavily forested shore, scouting for wildlife. We may stop for a visit at a settler's home carved out of the forest. In the early afternoon we will be near an extraordinary river called the Rio Jaueperi. Here we will see a kind of forest known as the *varzea*. We will scout along the shoreline for some of the extraordinary creatures found only in this unique environment. Weather permitting we will have a night excursion to observe nocturnal creatures. (BLD)

**Day 5** Today we depart the *Rio Jaueperi* and head downstream on the *Rio Negro* exploring a new collection of rainforest habitats. In the daytime we will continue to scout in our launches and walk in the forest, and at night we will continue our hunts for nocturnal wildlife. (BLD)

**Day 6** After a walk in the forest we cross to the west side of the Rio Negro, exploring as we go. We will stop at the substantial boat building village of Novo Airão. As we walk through the streets we'll marvel at how the 19th Century thrives in this remote corner of the globe. Tonight the M/Y TUCANO goes downstream to arrive by morning near the confluence with the Amazon River. As we glide through the starry darkness this is a good night to sip the national drink of Brasil, the "Caipirinha" and perhaps try a bit of samba on the top deck. (BLD)



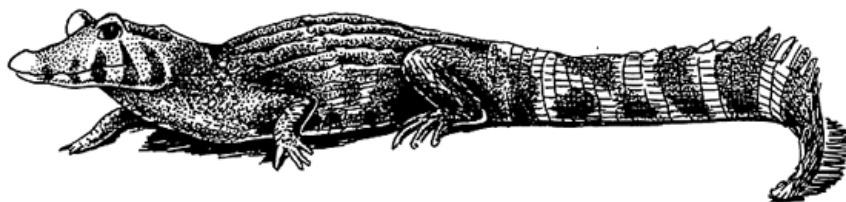
**Day 7** This morning we explore the Lago Janauari Ecological Park where the thick brown water of the Amazon flows swiftly through the forest. This area is usually a very good place to observe wildlife. Around midday the vessel will travel to the "Encontra das Aguas" a stark several mile long line where two of the world's largest rivers, the Amazon and the Negro, join in a turbulent maelstrom. Here the dark water of the Negro runs beside the opaque brown water of the Amazon. In the afternoon we scout one of the hidden streams in the area to try to see more of the Amazon's beautiful and bizarre creatures. Tonight we will have a farewell dinner and prepare for an early departure in the morning. (BLD)

**Day 8** Early this morning, after a hearty breakfast, all guests disembark from the M/Y TUCANO. (B)

*Meal Codes: B = Breakfast, L = Lunch, D = Dinner*

*Please note that the day to day schedule is approximate. The exact order of the days and specific features may be altered due to navigational and other scheduling considerations.*

*Degree of Difficulty: Good health is necessary. Most guests can have a quite enjoyable trip by simply staying on board the M/Y TUCANO and participating in launch excursions. Participants in our walks in the forest must be able to comfortably walk for two or more hours at a time.*



## 19) Compact Amazon Cruise 5D/4N: The Amazon Odyssey

This compact voyage endeavors to capture the spirit of the Amazon on two of its greatest rivers, the Rio Negro and the Amazon River. Over three and one half days we walk in the forest, explore in our launches, and visit local communities along the edges of these magnificent rivers.

There are three or four excursions off the vessel every day. Early mornings we usually glide along quiet channels in our launches among giant rainforest trees draped with vines and orchids. The silence is broken only by the rustling of leaves by Squirrel Monkeys feeding or by the occasional piercing shriek of a Screaming Piha bird. During the day we walk in the forest and sometimes visit a small community. Some nights we search for nocturnal creatures in our launches out in the star filled darkness.

The Amazon Odyssey takes us to a variety of environments including dark flooded forests, dense high forest with towering trees and dense undergrowth, and vast open plains of waving grass which are home to some of the most spectacular wildlife of the Amazon. On lazy afternoons we may fish for the famous Amazon resident, the Piranha, some of whom we may see again on an appetizer plate. During our voyage we are treated to the ever changing vistas of travel on the mighty Amazon River itself. Most travelers are astonished by the scale and grandeur of this majestic waterway that drains a continent.

On the **Amazon Odyssey** we not only focus on the rainforest, but also on the culture of the people who live in this vast wilderness. We visit small fishing villages perched on the river bank where the traditional life is still guided by the rhythms of the rise and fall of the river. We also visit the homesteads of families who make and grow almost everything they need. For many travelers these visits with local settlers, whose lives

are so dramatically different from ours, are some of the most memorable experiences of the cruise. Another fascinating visit is a stop at one of the bustling river trading towns. Here a vibrant river trade continues as it has for centuries. The last evening of the cruise we will coast along one of the greatest ports in the world, the *Porto de Manaus*. At our farewell dinner we will have the opportunity to reflect on our extraordinary experience and offer a toast to one of the most remarkable places on Earth.

### Accommodations and Staff

The MOTOR YACHT TUCANO is not a luxury vessel, but is comfortable, safe, and very well suited to exploring the Amazon wilderness. The vessel was built in the elegant style of a classic river steamship, but it is actually a modern and fully certified commercial cruise vessel. While we are able to travel in comfort, we are not insulated from the forest. We remain focused on the flora and fauna of this magnificent wilderness. The voyage is quite active and we spend most of every day exploring the forest on foot or in our boat's launches.

The most successful Amazon cruise vessel is not the most luxurious, but instead the one that enables travelers to experience the wild beauty of the Amazon in the most full and authentic way. This is the guiding principle of both the design and operations of the M/Y TUCANO. The vessel is designed specifically to explore the Amazon in the most thoughtful and sustainable way. All of the cabins are outside cabins with air-conditioning and private bathrooms. Some cabins are smaller than others, but they are considered by most travelers to be comfortable.

The staff of the M/Y Tucano are highly trained mariners who bring years of deep forest exploration to our cruises. Our guides are bilingual naturalists who not only help us spot creatures, but also help us make sense of the riot of plant and animal life of the rainforest. Our cooks prepare elaborate meals always from fresh local ingredients and our sailors safely navigate us into some of the most fascinating waterways in the world.

### Itinerary Sketch

Day 1 **Manaus, Rio Negro:** Afternoon depart and voyage north on the Rio Negro.

Day 2 **Anavilhanas Archipelago:** Excursions into the rainforest during the day and at night.

Day 3 **Rio Negro:** Excursions in the forest during the day, at night travel downstream toward the Amazon River.

Day 4 **Rio Negro / Amazon:** Explore the *Lago Januari Ecological Park* near the Amazon River and cruise the meeting of the Amazon River and The Rio Negro. In the evening cruise upstream on the Rio Negro.

Day 5 **Manaus:** Disembark morning

Please note that our cruises are exploratory and we adapt the vessel course to maintain an interesting cruise. We may alter the itinerary due to low river levels. But this does not diminish the cruise, instead it allows us to improvise and seek interesting places to visit.



## Compact Amazon Cruise Itinerary: Amazon Odyssey (5D/4N)

**Day 1** This afternoon we embark on the MOTOR YACHT TUCANO in Manaus, Brasil. We depart on the *Rio Negro* and as the vessel glides upstream we will have our first talk about Amazon environments. By late afternoon we enter one of the world's largest river island systems, the *Anavilhanas Archipelago*. The boat will weave along a winding channel with rainforest on both sides in a riot of brilliant vegetation. Weather permitting, we will go for a launch excursion in the gnarled and dense flooded forest known as the *Igapó*. Along the river bank we may see some Squirrel Monkeys and we may hear the other-worldly growls of Howler Monkeys echoing through the primitive rainforest. The Amazon has one of the greatest collection of birds in the world and we are sure to see some of these brightly colored jewels perched in the treetops.

We return to the M/Y TUCANO for hors d'oeuvres on the observation deck and a toast to the rainforest sunset. Following dinner we will embark in our launches in search of nocturnal creatures such as the Caiman, the Amazon's crocodilians. We may also see one of the large night birds such as a Potoo with its bulging eyes and large mouth adapted to swallow the huge Mariposa Moths, (D)

**Day 2** Shortly after sunrise this morning we explore the Anavilhanas Archipelago, a reserve that includes the world's largest system of river islands and also areas of tall dense rainforest. Here we will see the strange environment called the *Igapó*, the black water flooded forest where dense forests grow right out of the dark water of the Rio negro. Mid morning we return to the vessel for a hearty Brazilian breakfast. After some time to relax, weather permitting we will disembark at mid-morning and will go for a walk in the type of rainforest known as the *Terra Firme*. Here we have a good chance to see the markings, if not the animals themselves, of some of the Amazon's great mammals like peccaries (wild pigs) or even a jaguar.

Around mid-day return to the vessel for lunch and a siesta. In the afternoon we will excursion in our launches along the edges of the dense forest and listen to the sunset chorus of birds, howler monkeys, and frogs. Weather permitting, tonight we will have an excursion to spot caiman (the Amazon's crocodiles) and other nocturnal creatures. We very often see arboreal porcupines or sloths scrambling high in the limbs. (BLD)

**Day 3** This morning we awaken to another remote rainforest area where we will explore in our launches early in the morning, and walk in the forest in mid morning. During the middle of the day the vessel will venture downstream to a small village on the east bank of the Rio Negro. Late this afternoon we will visit this community to learn how traditions help families survive in the remote interior. Later this evening our vessel will weigh anchor and we will voyage downstream through the night to the *Xiborena Peninsula* that divides the two of the world's most storied rivers: the *Rio Negro* and the *Amazon River*.

**Day 4** Rising early, we excursion in the *Lago Janauari Ecological Park*, a dense forest that is flooded with the coffee colored water of the Amazon River. We explore a labyrinth of small channels overhung with gargantuan trees and vines. Listening to the chatter of creatures in the undergrowth we also keep our eyes open for monkeys, Three Toed Sloths, and the occasional Collared Anteater. By mid morning we return to the M/Y TUCANO for a hearty breakfast and some time to relax. Later this morning we foray off the vessel again to explore this environment rich in life.

Following lunch we navigate to the "*Encontra das Aguas*", the several mile long joining of two of the world's greatest rivers, the Rio Negro and The Amazon. The dark and light waters run side by side for several miles without mixing. Often Pink River Dolphins and also Grey River Dolphins leap and cavort along this stark line of contrasting currents. We then will turn our bows upstream to cruise on the Amazon River until the late afternoon. On Brazilian maps this river is given the name *Rio Solimões* - but it is the same vast, turbulent, mighty river that we know of as the Amazon. At this point in its course it has truly become the most magnificent river on the planet and carries fully 20% of all the fresh water on Earth.

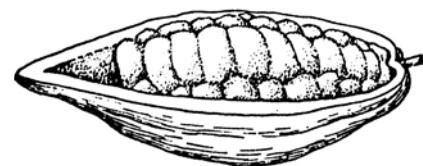
Late afternoon we will have another launch excursion in a fascinating environment known as the *Varzea* where we may angle for piranhas or thrill at brightly colored birds that hunt in these the vast fields of waving grass. At sunset we slowly begin to ascend the Rio Negro, cruising along but not stopping at the *Porto de Manaus*, one of the world's great ports. More than a thousand miles from the sea, Manaus is the major port for much of the entire Amazon. We will see boats of every imaginable shape and purpose that serve this continent sized forest. Tonight we will sample the national drink of Brasil, the *Caipirinha* and have a farewell dinner. (BLD)

**Day 5** Early this morning travelers will disembark the vessel at the riverside dock of the Hotel Tropical. (B)

Meal Codes: B= Breakfast, L= Lunch, D= Dinner.

Please note that all of our trips are exploratory and we adapt the vessel course to maintain an interesting cruise. We may alter the itinerary due to low river levels. But this does not diminish the cruise, instead it allows us to improvise in seeking interesting places to visit.

Degree of Difficulty: Good health is necessary. Though the trip does not include endurance hiking, participants should be able feel comfortable walking at a leisurely pace for 2 to 3 hours at a time.



## Frequently Asked Questions

**A) Will we see lots and lots of creatures?** The answer to this question is both yes *and* no. Amazonia has the greatest diversity of wildlife on Earth, but that does not mean the greatest *density* of wildlife. The experience on our excursions is not like a wildlife video where the animals are in large numbers and very close. The fantastic collection of creatures of the Amazon are spread out in the forest and on our approach, they actually *hide* from us. Often to take a good look at a creature will require binoculars. Unlike a trip to the plains of Africa where a traveller might see tens of thousands of animals migrating, in the Amazon we see lots of *kinds* of animals, but not large numbers each kind. On our expedition cruise we often see about 100 different species of birds, 3-6 kinds of monkeys, 5-10 different reptiles and amphibians, about 5 or so other types of mammals like anteaters or otters, and a vast collection of some of the most interesting plants on Earth. We never know what we will see on a trip, but our cruises generally see many more creatures than other cruises because of the skill of our guides, the small groups, and the fact that we go to unspoiled areas.

**B) Are these trips fun?:** Our trips are aimed at experiencing Amazon nature, but we also want to have fun! The best kind of nature trip is good humored and light hearted. We try to be precise about nature and enjoy ourselves at the same time. We have a cocktail hour on the top deck with hors d'oeuvres every evening and sometime during the trip will have "Caipirinhas" the national drink of Brasil with perhaps a bit of samba.

**C) Do we get a chance to go into the forest?:** Absolutely. This is not a traditional cruise where guests lounge most of the day. Actually, most of the nature portion of our voyage takes place off the vessel. We go walking in the forest every morning. We have several daily excursions in our launches and we visit small villages or the homes of pioneer families. Several nights during the cruise we also have excursions to observe nocturnal creatures.

**D) Is this an active program?:** The program is a quite active trip, but it also can be very relaxing, depending on what the guests prefer. Most of the boat travel is done in the middle of the day and at night, leaving lots of time for us to explore off the vessel. For guests who want an active program there are several hours spent exploring every day. But those that would prefer a more leisurely trip can pick and choose among the excursions. Because we are surrounded by rainforest for the whole trip, it is an interesting experience just being on the vessel itself.

**E) Are the forest walks strenuous?:** Our forest walks are primarily to spot plants and animals and are not particularly difficult. The best way to spot wildlife is a quiet stalk along the forest trail, not crashing through at a sprint. Since different guests like to walk at a different paces, we usually divide into two groups, each with a guide and a skilled woodsman. One group can quietly observe life in the forest and the other group can go for a more vigorous hike and work up a sweat. Guests can also choose at any time to stay on the vessel and relax on the observation deck with a cold drink, binoculars, and a good book. Guests can participate as little or as much as they wish.

**F) When is the best time to go?:** The best time to travel is really dependent on your own scheduling considerations. The key to observing wildlife is not when you travel, but rather the diligence of the guides and the guests, and a little bit of luck. We operate our expeditions all year round and the trips are wonderful any time of year.

Our trips take place in the very middle of the Amazon in the State of Amazonas, Brasil. It rains much less in the central of the Amazon than it does in the western end, as much as 30% less. The rainy season runs roughly from late January through early May. Though it can rain more in the rainy season, it is rare to have a full day of rain. Though it rains more between January and May, there are some advantages to traveling in this season. Most riverine plants fruit and flower in this period, and it is generally a bit cooler.

The dry season runs from June to December and in this period the rivers begin to shallow and broad beaches of fine white sand appear. It often rains a bit in the afternoon in the dry season too. This is an excellent time to see large fishing birds, and at night, reptiles like caiman, the Amazon's crocodiles. The months of October and November correspond to the lowest river levels of the year and we usually modify the itinerary to adapt to the changing river channels. In quite low water years we sometimes modify the itinerary in order to be able to explore the most interesting areas.

The M/Y TUCANO mostly travels in the middle of the day and at night, which leaves the best hours to explore. But when we do travel, when practical, the vessel hugs the shore line and it is interesting to observe the nearby forest. We are constantly on the lookout for creatures which frequently congregate at the river's edge. Though we remain comfortable, we do not become insulated from the forest. The river is fascinating to watch since we often see large fish leaping, pink dolphins, countless birds, and strange gargantuan trees with hanging vines.

### About Amazon Nature Tours

We began operating ecological tours in the Brazilian Amazon in 1989, though we have worked in the Amazon since 1982. Our programs are the most intensive and thoughtful offered in the entire Amazon. We have conducted hundreds of trips in the Amazon, many with very well known guests and scientific guides. Your travelers will find our trips fascinating.



Celebrating 23  
Years of Amazon  
Operations



Amazonastur  
Empresa Estadual de Turismo

